



The Right Partner for *YOUR* Success!

GROCERY PACKAGING PRODUCTS

Elkay® Plastics Co., Inc.



Food Merchandising and Storage Solutions for the Bakery, Produce, Deli, Meat & Seafood Departments



SECTION 1 READY. CHEF. GO!® PROGRAM



From the bag to the plate in about 3 1/2 minutes -- cooks in the microwave!



**READY.
CHEF.
GO!**

Consider dinner **done.**

Ready. Chef. Go!® is more than a cooking bag, it's a complete program that grocers and food processors are using to increase their sales, profits and customer loyalty. When your grocery and food processor customers implement the Ready. Chef. Go!® program, they're taking advantage of one of the hottest trends in the Foodservice industry: fresh packaged meals that consumers take home and cook for a delicious meal in minutes without the mess or fuss normally associated with home cooking. The bags listed below are our stock bag program. The bags can be customized to meet the needs of practically any program for a unique customer experience.

GOURMET COOKING BAGS

- Bags are available plain or printed with cooking instructions for a variety of proteins and vegetables in English and Spanish
- Can be used to cook in microwave or oven for great results every time
- Features a clear opening window and natural (brown) or black backing

1.1 GOURMET COOKING BAGS (Adhesive & Heat Seal)

- Self-sealing fold over tape strips create a leak and odor resistant seal (*Adhesive Seal*)
- Seal with standard impulse sealer (*Heat Seal*)
- Packaged 250 bags/case

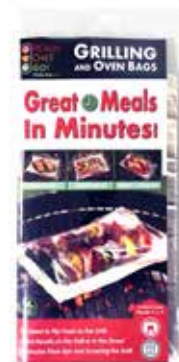
| ADHESIVE SEAL | HEAT SEAL | SIZE | DESCRIPTION |
|---------------|-----------|--------|---------------|
| OSS0911 | OV0911 | 9 X 11 | Plain Brown |
| OSS0911P | OV0911P | 9 X 11 | Printed Brown |
| OSS0911B | | 9 X 11 | Plain Black |
| OSS0911BP | | 9 X 11 | Printed Black |
| OSS0916 | OV0916 | 9 X 16 | Plain Brown |
| OSS0916P | OV0916P | 9 X 16 | Printed Brown |
| OSS1108 | OV1108 | 11 X 8 | Plain Brown |
| OSS1108P | OV1108P | 11 X 8 | Printed Brown |
| | OV1108B | 11 X 8 | Plain Black |
| | OV1108BP | 11 X 8 | Printed Black |



NEW 1.2 READY. CHEF. GO!® RETAIL PACK

- Now customers can experience these bags in their own kitchen!
- Individually labeled retail pack (6 units OSS0911P-RP/pack-48 packs/case)
- Individually labeled retail pack (4 units BBQ0912-RP/pack-48 packs/case)

| ITEM | SIZE | DESCRIPTION | QTY /RETAIL PACK | RETAIL PACK /CASE | LBS /CASE |
|-------------|----------------|--|------------------|-------------------|-----------|
| OSS0911P-RP | 8 3/4 X 10 3/4 | Brown/Glassine Cooking Bags in Retail Pack | 6 | 48 | 8.4 |
| BBQ0912-RP | 8 3/4 X 11 3/4 | Black/Glassine Cooking Bags in Retail Pack | 4 | 48 | 9.9 |





NEW 1.3 STAND-UP POUCH

- Outstanding product presentation in the refrigerated case
- Great for packaging fresh produce

| ITEM | SIZE | DESCRIPTION | QTY/CASE | LBS/CASE |
|-----------|---------------------|------------------------------|----------|----------|
| OSS8735BG | 8 X 7 + 3½BG + 1½LP | Brown Printed Stand-Up Pouch | 250 | 3.9 |



STAND-UP POUCH

1.4 DUAL COMPARTMENT COOKING BAG

- Printed adhesive-seal dual compartment cooking bag to keep proteins and sides separated

| ITEM | SIZE | DESCRIPTION | QTY/CASE | LBS/CASE |
|------------|---------|---------------------------------|----------|----------|
| OSS1285DCP | 12 X 8½ | Brown/Glassine Dual Compartment | 250 | 4.7 |



DUAL COMPARTMENT BAG

1.5 LASER PERFORATED COOKING BAG

- Printed heat seal cooking bag with laser perforations for optimum oxygen transmission
- Helps promote longer shelf-life for vegetables and other perishables

| ITEM | SIZE | DESCRIPTION | QTY/CASE | LBS/CASE |
|-------------|---------|---------------------------------|----------|----------|
| OV958BP-LSV | 12 X 8½ | Black/Glassine Laser Perforated | 250 | 2.9 |



LASER-PERF BAG

1.6 SELF-SEALING BBQ AND OVEN BAGS

- Features a clear window, foil backing and non-stick silicized paper layer
- Eliminates the need to flip food on the grill
- Food can be cooked on grill, BBQ or in conventional oven up to 350° F

| ITEM | SIZE | QTY /CASE | LBS /CASE |
|---------|-----------|-----------|-----------|
| BBQ0912 | 8¼ X 11¼ | 250 | 9.9 |
| BBQ0916 | 8¼ X 15¼ | 250 | 12.5 |
| BBQ1212 | 12¼ X 11¼ | 250 | 13.1 |
| BBQ1216 | 12¼ X 15¼ | 250 | 16.6 |



SELF-SEALING BBQ BAGS

THE READY. CHEF. GO![®] BAG IS AT THE HEART OF A COMPLETE PROGRAM THAT BENEFITS CONSUMERS, GROCERS, AND PROCESSORS.

FOR GROCERS:

Ready. Chef. Go![®] helps grocers give their customers the fresh, ready-to-cook meals that they're looking for. The grocer controls the program, so they can take advantage of regional preferences to cater to their customers' unique tastes. Consumers enjoy the taste, convenience and value that Ready. Chef. Go![®] provides.

- Increased perishables sales (at a great margin!)
- Builds customer loyalty
- Completely customizable program to meet your local needs
- Training and support available

FOR DISTRIBUTORS:

Don't just be a "me too" supplier to your customers! Work with your grocery and processor customers to create a Ready. Chef. Go![®] program that is profitable and helps build customer loyalty. The Ready. Chef. Go![®] sales team can work with you and your customers to build a successful program.

FOR PROCESSORS:

With the Ready. Chef. Go![®] Cooking Bag, food is gently steam cooked in the oven or microwave, resulting in a delicious meal in minutes. The bags work great with a wide variety of meats, seafood and produce, so processors can create unique meal solutions. Custom bag options include size, printing, laser perf and more.

- Steam cooking method for excellent results with a wide variety of foods
- Custom options for different meals and preservation requirements

CUSTOM READY. CHEF. GO![®] PROGRAM

Custom printing, bag configurations, bag sizes and other features such as vents and laser perf can be incorporated to produce a bag that meets your exact needs. Our team can help you and your customers with specifications and the design process.



www.ReadyChefGoBags.com

TABLE OF CONTENTS

| | | | | | |
|----------|---|----------|-----------|---|-----------|
| 1 | Ready. Chef. Go![®] | 1 | 10 | Bun Pan and Rack Covers | 9 |
| 2 | Produce Bags | 3 | 11 | Wicket Bags | 9 |
| 3 | Bags on Rolls | 4 | 12 | Meat, Poultry and Seafood Bags | 10 |
| 4 | Side Gusset Bags | 4 | 13 | Vacuum Pouches | 11 |
| 5 | Polypropylene Bags | 6 | 14 | Poly Pan Liners | 12 |
| 6 | Polypropylene Co-Extruded Bags | 7 | 15 | T-Sacks/Merchandise Bags & Wet Packs | 13 |
| 7 | Deli Bags | 8 | 16 | Reclosable Bags | 14 |
| 8 | Wraps and Sheets | 9 | 17 | Ice Bags | 14 |
| 9 | Bakery Bags | 9 | 18 | Miscellaneous | 14 |

SECTION 2 PRODUCE BAGS

2.1 HOLE VENTED BAGS



- Vent holes allow contents to retain just the right amount of moisture to keep vegetables fresh
- Generous gussets allow the bags to be filled quickly

| ITEM | SIZE | MATERIAL | GAUGE (MIL) | QTY /CASE | APPROX LBS/M | CUBE |
|-----------|-------------|----------|-------------|-----------|--------------|------|
| VTD063515 | 6 X 3½ X 15 | LDPE | 0.7 | 1000 | 6.7 | 0.19 |
| VTD063518 | 6 X 3½ X 18 | LDPE | 0.9 | 1000 | 9.7 | 0.91 |
| VTD083020 | 8 X 3 X 20 | LDPE | 0.8 | 1000 | 11.7 | 0.32 |
| VTD084013 | 8 X 4 X 13 | LDPE | 0.7 | 1000 | 7.3 | 0.21 |
| VTD096022 | 9 X 6 X 22 | LDPE | 1.3 | 1000 | 28.7 | 0.28 |

2.2 PRINTED CELERY BAG ON WICKET DISPENSER



- Printed 3 colors, 2 sides with "Fresh Celery" and a bold celery graphic
- 250 bags/wicket

| ITEM | SIZE | MATERIAL | GAUGE (MIL) | QTY /CASE | APPROX LBS/CASE | CUBE |
|-------------------|-----------------------|----------|-------------|-----------|-----------------|------|
| 10F-0614+3BGWCLRY | 6 X 14½ + 3½BG + 1½LP | LDPE | 1.0 | 1000 | 6.8 | 0.23 |

2.3 VENTED LETTUCE BAGS



- Used for head lettuce
- Packaged in convenient dispenser carton
- Vented so lettuce retains the correct amount of moisture for freshness

| ITEM | SIZE | MATERIAL | GAUGE (MIL) | QTY /CASE | APPROX LBS/CASE | CUBE |
|-----------------|--|----------|-------------|-----------|-----------------|------|
| VTD70511 | 7 X 5 X 11 | LDPE | 0.8 | 1000 | 7.0 | 0.20 |
| VTD1108+3BG | 11 X 8¼ + 3½BG | PPE | 1.0 | 1000 | 7.3 | 0.20 |
| VTD1212+4BG | 12 X 12 + 4BG | PPE | 1.0 | 1000 | 11.2 | 0.31 |
| P10F1209+4BGLTC | 12 X 9¼ + 4BG Printed "Eat 5 A Day" (1C/1S) | PPE | 1.0 | 1000 | 9.4 | 0.26 |

2.4 VENTED "GREENS 'N THINGS" BAG ON WICKET DISPENSER



- Holds leaf lettuce, collard greens, mustard greens, spinach, kale and other produce
- Vent holes allow air to circulate, prolonging freshness
- 200 bags/wicket

| ITEM | SIZE | MATERIAL | GAUGE (MIL) | QTY /CASE | APPROX LBS/CASE | CUBE |
|----------------|--|----------|-------------|-----------|-----------------|------|
| VTD1718HI-DGRN | 17 X 18 + 6BG + 1½LP Printed "Greens 'N Things" (2C/1S) | HDPE | 0.6 | 1000 | 14.8 | 0.59 |

2.5 PRODUCE BAGS ON PLASTIC HEADER



- Plastic header for convenient dispensing

| ITEM | SIZE | MATERIAL | GAUGE (MIL) | BAGS /HEADER | QTY /CASE | APPROX LBS/CASE | CUBE |
|--------------|--|----------|-------------|--------------|-----------|-----------------|------|
| E1117LLD-D5 | 11 X 17 + 2LP Printed "Eat 5 A Day" (2C/1S) | LLDPE | 0.55 | 200 | 2000 | 14.5 | 0.41 |
| E1217LLD | 12 X 17 + 2LP | LLDPE | 0.55 | 200 | 2000 | 15.8 | 0.49 |
| E1322LLD-CRN | 13 X 22 + 2LP Printed "Sun Ripe Corn" (2C/1S) | LLDPE | 1.2 | 100 | 500 | 12.0 | 0.33 |

2.6 VENTED V-SHAPED GRAPE BAG



- For packaging of bulk grapes
- Vent holes for air circulation
- Twist ties included
- 50 bags/bundle

| ITEM | SIZE | MATERIAL | GAUGE (MIL) | QTY /CASE | APPROX LBS/CASE | CUBE |
|-------------|----------|----------|-------------|-----------|-----------------|------|
| VTD12135GRP | 12 X 13½ | LDPE | 1.5 | 1000 | 9.8 | 1.01 |

2.7 VENTED 5 LB. POTATO BAG



- Strong low density material holds up to 5 lbs
- Vent holes allow air to circulate, prolonging freshness

| ITEM | SIZE | MATERIAL | GAUGE (MIL) | QTY /CASE | APPROX LBS/CASE | CUBE |
|-------------|---|----------|-------------|-----------|-----------------|------|
| 10G-6145POT | 6 X 3½ X 16½ Printed "Potatoes 5 LBS" (2C/1S) | LDPE | 1.0 | 1000 | 10.5 | 0.29 |

2.8 SADDLE PACK PRODUCE BAG



- Ideal for storing green beans, cherries, and other fruits and vegetables
- Vent holes prolong freshness

| ITEM | SIZE | MATERIAL | GAUGE (MIL) | QTY /CASE | APPROX LBS/CASE | CUBE |
|------------|--------------|----------|-------------|-----------|-----------------|------|
| FSL1173VTD | 11 X 7 + 3BG | LDPE | 1.5 | 500 | 6.4 | 0.43 |

2.9 LOOP HANDLE PRODUCE BAG (FAST TAKE®)



- High clarity for excellent product presentation
- Used for produce and many other applications

| ITEM | SIZE | MATERIAL | GAUGE (MIL) | QTY /CASE | APPROX LBS/CASE | CUBE |
|--------|---------------------|----------|-------------|-----------|-----------------|------|
| TO6484 | 6¾ X 4¾ X 8½ + 4½BG | PPE | 3.0 | 200 | 9.7 | 0.34 |

SECTION 3 BAGS ON ROLLS

3.1 UTILITY BAGS ON ROLLS WITH TWIST TIES



- Choose from economical HDPE or the extra strength of LDPE material
- Packaged on rolls for convenience and cleanliness

| ITEM | SIZE | MATERIAL | GAUGE (MIL) | QTY /ROLL | APPROX LBS/ROLL | CUBE |
|------------|---------|----------|-------------|-----------|-----------------|------|
| BOR75658* | 6½ X 8 | LDPE | 0.75 | 2000 | 5.2 | 0.21 |
| BOR6509HD* | 6½ X 9 | HDPE | 0.5 | 2000 | 4.0 | 0.15 |
| BOR1014HD* | 10 X 14 | HDPE | 0.5 | 1000 | 4.8 | 0.19 |
| BOR751014* | 10 X 14 | LDPE | 0.75 | 1000 | 7.0 | 0.26 |
| BOR1218HD* | 12 X 18 | HDPE | 0.5 | 1000 | 7.3 | 0.28 |
| BOR121824* | 18 X 24 | LDPE | 1.1 | 250 | 7.9 | 0.30 |
| BOR1824HD* | 18 X 24 | HDPE | 0.6 | 250 | 4.3 | 0.23 |
| BOR1830HD* | 18 X 30 | HDPE | 0.5 | 200 | 3.7 | 0.18 |

*These items include twist ties

3.2 HIGH DENSITY UTILITY/FOOD STORAGE BAGS ON ROLLS



- Outstanding strength and light weight
- Packed on convenient rolls for easy dispensing

| ITEM | SIZE | MATERIAL | GAUGE (MIL) | QTY /ROLL | APPROX LBS/ROLL | CUBE |
|------------|--------------------------------|----------|-------------|-----------|-----------------|------|
| E1114HI-D | 11 X 14 | HDPE | 0.5 | 2000 | 9.4 | 0.31 |
| E1114HI-D5 | 11 X 14 (Printed "5 A Day") | HDPE | 0.5 | 1250 | 5.8 | 0.31 |
| E1119HI-D5 | 11 X 19 (Printed "5 A Day") | HDPE | 0.5 | 825 | 5.3 | 0.24 |
| E1119HI-D | 11 X 19 | HDPE | 0.5 | 1500 | 10.5 | 0.33 |
| E1119HI-DP | 11 X 19 (Printed "5 A Day") | HDPE | 0.5 | 1200 | 8.5 | 0.24 |

3.3 TUBING RACKS

| ITEM | SIZE | QTY /CASE | APPROX LBS/CASE | CUBE |
|----------|-----------------|-----------|-----------------|------|
| TBRACK12 | 12" Tubing Rack | 1 | 2.7 | 0.72 |
| TBRACK24 | 24" Tubing Rack | 1 | 4.4 | 2.09 |

Go to www.elkayplastics.com for the most current product information.

Now MOBILE AND TABLET-FRIENDLY so you can get more done while on the go!



SECTION 4 SIDE GUSSET BAGS

4.1 SIDE GUSSET UTILITY BAGS



- Meet FDA requirements for use in food applications
- Made from seamless tubing and are bottom sealed for extra strength, with no slits or side seals
- Bags 15" wide and under come in dispenser packs of 100 for cleanliness and convenience

| ITEM | SIZE | MATERIAL | GAUGE (MIL) | QTY /CASE | APPROX LBS/M | CUBE |
|------------|--------------|----------|-------------|-----------|--------------|------|
| 6G042008 | 4 X 2 X 8 | LLDPE | 0.6 | 1000 | 1.9 | 0.06 |
| 7G042008 | 4 X 2 X 8 | LLDPE | 0.75 | 1000 | 2.4 | 0.07 |
| 8G042008 | 4 X 2 X 8 | LLDPE | 0.85 | 1000 | 2.7 | 0.08 |
| 10G-042008 | 4 X 2 X 8 | LDPE | 1.0 | 1000 | 3.2 | 0.13 |
| 12G-042008 | 4 X 2 X 8 | LDPE | 1.25 | 1000 | 4.0 | 0.12 |
| 15G-042008 | 4 X 2 X 8 | LDPE | 1.5 | 1000 | 4.8 | 0.13 |
| 20G-042008 | 4 X 2 X 8 | LDPE | 2.0 | 1000 | 6.4 | 0.21 |
| 8G042010 | 4 X 2 X 10 | LLDPE | 0.85 | 1000 | 3.4 | 0.10 |
| 15G-042010 | 4 X 2 X 10 | LDPE | 1.5 | 1000 | 6.0 | 0.16 |
| 20G-042010 | 4 X 2 X 10 | LDPE | 2.0 | 1000 | 8.0 | 0.27 |
| 6G042012 | 4 X 2 X 12 | LLDPE | 0.6 | 1000 | 2.9 | 0.09 |
| 7G042012 | 4 X 2 X 12 | LLDPE | 0.75 | 1000 | 3.6 | 0.10 |
| 8G042012 | 4 X 2 X 12 | LLDPE | 0.85 | 1000 | 4.1 | 0.12 |
| 10G-042012 | 4 X 2 X 12 | LDPE | 1.0 | 1000 | 4.8 | 0.14 |
| 12G-042012 | 4 X 2 X 12 | LDPE | 1.25 | 1000 | 6.0 | 0.17 |
| 15G-042012 | 4 X 2 X 12 | LDPE | 1.5 | 1000 | 7.2 | 0.19 |
| 20G-042012 | 4 X 2 X 12 | LDPE | 2.0 | 1000 | 9.6 | 0.29 |
| 7G053015 | 5 X 3 X 15 | LLDPE | 0.75 | 1000 | 6.0 | 0.17 |
| 7G053513 | 5 X 3½ X 13 | LLDPE | 0.75 | 1000 | 5.5 | 0.14 |
| 10G-053513 | 5 X 3½ X 13 | LDPE | 1.0 | 1000 | 7.4 | 0.19 |
| 12G-053513 | 5 X 3½ X 13 | LDPE | 1.25 | 1000 | 9.2 | 0.23 |
| 20G-053513 | 5 X 3½ X 13 | LDPE | 2.0 | 1000 | 14.7 | 0.50 |
| 7G054018 | 5 X 4 X 18 | LLDPE | 0.75 | 1000 | 8.1 | 0.20 |
| 10G-054021 | 5 X 4 X 21 | LDPE | 1.0 | 1000 | 12.6 | 0.31 |
| 7G054024 | 5 X 4 X 24 | LLDPE | 0.75 | 1000 | 10.8 | 0.26 |
| 10G-054024 | 5 X 4 X 24 | LDPE | 1.0 | 1000 | 14.4 | 0.38 |
| 12G-054024 | 5 X 4 X 24 | LDPE | 1.25 | 1000 | 18.0 | 0.50 |
| 7G054515 | 5 X 4½ X 15 | LLDPE | 0.75 | 1000 | 7.1 | 0.17 |
| 10G-054515 | 5 X 4½ X 15 | LDPE | 1.0 | 1000 | 9.5 | 0.22 |
| 12G-054515 | 5 X 4½ X 15 | LDPE | 1.25 | 1000 | 11.9 | 0.27 |
| 7G054518 | 5 X 4½ X 18 | LLDPE | 0.75 | 1000 | 8.5 | 0.20 |
| 10G-054518 | 5 X 4½ X 18 | LDPE | 1.0 | 1000 | 11.4 | 0.26 |
| 8G055024 | 5 X 5 X 24 | LLDPE | 0.8 | 1000 | 12.8 | 0.30 |
| 8G055030 | 5 X 5 X 30 | LLDPE | 0.8 | 1000 | 16.0 | 0.36 |
| 10G-050530 | 5 X 5 X 30 | LDPE | 1.0 | 1000 | 20.0 | 0.48 |
| 15G-052212 | 5¼ X 2¼ X 12 | LDPE | 1.5 | 1000 | 9.0 | 0.25 |
| 12G-052215 | 5¼ X 2¼ X 15 | LDPE | 1.25 | 1000 | 9.4 | 0.27 |
| 15G-052215 | 5¼ X 2¼ X 15 | LDPE | 1.5 | 1000 | 11.3 | 0.31 |

4.1 SIDE GUSSET UTILITY BAGS (CONTINUED)

| ITEM | SIZE | MATERIAL | GAUGE (MIL) | QTY /CASE | APPROX LBS/M | CUBE |
|------------|--------------|----------|-------------|-----------|--------------|------|
| 8G055020 | 5¼ X 5 X 20 | LLDPE | 0.8 | 1000 | 11.0 | 0.26 |
| 8G553024 | 5½ X 3 X 24 | LLDPE | 0.85 | 1000 | 11.6 | 0.30 |
| 8G553029 | 5½ X 3 X 29 | LLDPE | 0.85 | 1000 | 14.0 | 0.36 |
| 6G055415 | 5½ X 4¾ X 15 | LLDPE | 0.6 | 1000 | 6.2 | 0.17 |
| 7G055415 | 5½ X 4¾ X 15 | LLDPE | 0.75 | 1000 | 7.7 | 0.20 |
| 10G-055415 | 5½ X 4¾ X 15 | LDPE | 1.0 | 1000 | 10.3 | 0.24 |
| 07G-055416 | 5½ X 4¾ X 16 | LDPE | 0.75 | 1000 | 8.2 | 1.05 |
| 8G055416 | 5½ X 4¾ X 16 | LLDPE | 0.8 | 1000 | 8.8 | 1.00 |
| 6G055419 | 5½ X 4¾ X 19 | LLDPE | 0.6 | 1000 | 7.8 | 0.20 |
| 7G055419 | 5½ X 4¾ X 19 | LLDPE | 0.75 | 1000 | 9.7 | 0.23 |
| 10G-055419 | 5½ X 4¾ X 19 | LDPE | 1.0 | 1000 | 13.0 | 0.33 |
| 12G-055419 | 5½ X 4¾ X 19 | LDPE | 1.25 | 1000 | 16.3 | 0.40 |
| 10G-055422 | 5½ X 4¾ X 22 | LDPE | 1.0 | 1000 | 15.0 | 0.37 |
| 7G063012 | 6 X 3 X 12 | LLDPE | 0.75 | 1000 | 5.4 | 0.15 |
| 8G063012 | 6 X 3 X 12 | LLDPE | 0.85 | 1000 | 6.1 | 0.18 |
| 10G-063012 | 6 X 3 X 12 | LDPE | 1.0 | 1000 | 7.2 | 0.20 |
| 12G-063012 | 6 X 3 X 12 | LDPE | 1.25 | 1000 | 9.0 | 0.24 |
| 15G-063012 | 6 X 3 X 12 | LDPE | 1.5 | 1000 | 10.8 | 0.28 |
| 20G-063012 | 6 X 3 X 12 | LDPE | 2.0 | 1000 | 14.4 | 0.44 |
| 6G063015 | 6 X 3 X 15 | LLDPE | 0.6 | 1000 | 5.4 | 0.16 |
| 7G063015 | 6 X 3 X 15 | LLDPE | 0.75 | 1000 | 6.7 | 0.18 |
| 8G063015 | 6 X 3 X 15 | LLDPE | 0.85 | 1000 | 7.7 | 0.20 |
| 10G-063015 | 6 X 3 X 15 | LDPE | 1.0 | 1000 | 9.0 | 0.25 |
| 12G-063015 | 6 X 3 X 15 | LDPE | 1.25 | 1000 | 11.3 | 0.30 |
| 15G-063015 | 6 X 3 X 15 | LDPE | 1.5 | 1000 | 13.5 | 0.35 |
| 20G-063015 | 6 X 3 X 15 | LDPE | 2.0 | 1000 | 18.0 | 0.54 |
| 20G-063018 | 6 X 3 X 18 | LDPE | 2.0 | 1000 | 21.6 | 0.64 |

| ITEM | SIZE | MATERIAL | GAUGE (MIL) | QTY /CASE | APPROX LBS/M | CUBE |
|------------|-------------|----------|-------------|-----------|--------------|------|
| 7G063515 | 6 X 3½ X 15 | LLDPE | 0.75 | 1000 | 7.1 | 0.20 |
| 8G063515 | 6 X 3½ X 15 | LLDPE | 0.85 | 1000 | 8.1 | 0.23 |
| 10G-063515 | 6 X 3½ X 15 | LDPE | 1.0 | 1000 | 9.5 | 0.26 |
| 12G-063515 | 6 X 3½ X 15 | LDPE | 1.25 | 1000 | 11.9 | 0.30 |
| 15G-063515 | 6 X 3½ X 15 | LDPE | 1.5 | 1000 | 14.3 | 0.35 |
| 8G063518 | 6 X 3½ X 18 | LDPE | 0.85 | 1000 | 9.7 | 0.27 |
| 10G-063518 | 6 X 3½ X 18 | LDPE | 1.0 | 1000 | 11.4 | 0.31 |
| 15G-063518 | 6 X 3½ X 18 | LDPE | 1.5 | 1000 | 17.1 | 0.48 |
| 15G-064012 | 6 X 4 X 12 | LDPE | 1.5 | 1000 | 12.0 | 0.31 |
| 15G-064015 | 6 X 4 X 15 | LDPE | 1.5 | 1000 | 15.0 | 0.41 |
| 10G-064024 | 6 X 4 X 24 | LLDPE | 1.0 | 1000 | 16.0 | 0.40 |
| 20G-074018 | 7 X 4 X 18 | LDPE | 2.0 | 1000 | 26.4 | 0.76 |
| 10G-076015 | 7 X 6 X 15 | LDPE | 1.0 | 1000 | 13.0 | 0.31 |
| 6G083015 | 8 X 3 X 15 | LLDPE | 0.6 | 1000 | 6.6 | 0.19 |
| 7G083015 | 8 X 3 X 15 | LLDPE | 0.75 | 1000 | 8.2 | 0.23 |
| 8G083015 | 8 X 3 X 15 | LLDPE | 0.85 | 1000 | 9.4 | 0.28 |
| 10G-083015 | 8 X 3 X 15 | LDPE | 1.0 | 1000 | 11.0 | 0.31 |
| 12G-083015 | 8 X 3 X 15 | LDPE | 1.25 | 1000 | 13.8 | 0.39 |
| 15G-083015 | 8 X 3 X 15 | LDPE | 1.5 | 1000 | 16.5 | 0.51 |
| 20G-083015 | 8 X 3 X 15 | LDPE | 2.0 | 1000 | 22.0 | 0.67 |
| 7G083020 | 8 X 3 X 20 | LLDPE | 0.75 | 1000 | 11.0 | 0.32 |
| 12G-083020 | 8 X 3 X 20 | LDPE | 1.25 | 1000 | 18.3 | 0.53 |
| 15G-083021 | 8 X 3 X 21 | LDPE | 1.5 | 1000 | 23.1 | 0.70 |
| 7G084012 | 8 X 4 X 12 | LLDPE | 0.75 | 1000 | 7.2 | 0.19 |
| 12G-084012 | 8 X 4 X 12 | LDPE | 1.25 | 1000 | 12.0 | 0.35 |
| 7G084015 | 8 X 4 X 15 | LLDPE | 0.75 | 1000 | 9.0 | 0.24 |
| 15G-084015 | 8 X 4 X 15 | LDPE | 1.5 | 1000 | 18.0 | 0.51 |
| 6G084018 | 8 X 4 X 18 | LLDPE | 0.6 | 1000 | 8.7 | 0.22 |
| 7G084018 | 8 X 4 X 18 | LLDPE | 0.75 | 1000 | 10.8 | 0.28 |
| 8G084018 | 8 X 4 X 18 | LLDPE | 0.85 | 1000 | 12.2 | 0.43 |
| 10G-084018 | 8 X 4 X 18 | LDPE | 1.0 | 1000 | 14.4 | 0.43 |
| 12G-084018 | 8 X 4 X 18 | LDPE | 1.25 | 1000 | 18.0 | 0.52 |
| 15G-084018 | 8 X 4 X 18 | LDPE | 1.5 | 1000 | 21.6 | 0.60 |
| 20G-084018 | 8 X 4 X 18 | LDPE | 2.0 | 1000 | 28.8 | 0.84 |
| 30G-080418 | 8 X 4 X 18 | LDPE | 3.0 | 1000 | 43.2 | 0.92 |
| 8G084020 | 8 X 4 X 20 | LLDPE | 0.8 | 1000 | 12.8 | 0.33 |
| 12G-084020 | 8 X 4 X 20 | LDPE | 1.25 | 1000 | 20.0 | 0.57 |
| 8G084021 | 8 X 4 X 21 | LLDPE | 0.85 | 1000 | 14.3 | 0.50 |
| 10G-084021 | 8 X 4 X 21 | LDPE | 1.0 | 1000 | 16.8 | 0.50 |
| 12G-084021 | 8 X 4 X 21 | LDPE | 1.25 | 1000 | 21.0 | 0.61 |
| 15G-084021 | 8 X 4 X 21 | LDPE | 1.5 | 1000 | 25.2 | 0.68 |
| 20G-084021 | 8 X 4 X 21 | LDPE | 2.0 | 1000 | 33.6 | 0.97 |
| 15G-084024 | 8 X 4 X 24 | LDPE | 1.5 | 1000 | 28.8 | 0.78 |
| 7G085015 | 8 X 5 X 15 | LLDPE | 0.75 | 1000 | 9.8 | 0.26 |
| 10G-085015 | 8 X 5 X 15 | LDPE | 1.0 | 1000 | 13.0 | 0.34 |
| 10G-085018 | 8 X 5 X 18 | LDPE | 1.0 | 1000 | 15.6 | 0.45 |
| 10G-096018 | 9 X 6 X 18 | LDPE | 1.0 | 1000 | 18.0 | 0.48 |
| 7G104020 | 10 X 4 X 20 | LLDPE | 0.75 | 1000 | 14.0 | 0.54 |

The Elkay® ADVANTAGE

ELKAY PACKAGING

Elkay packaging is second-to-none! Elkay bags are packaged in clearly labeled and bar-coded cartons to help your operation run more efficiently. Most of Elkay's case-packed bags 15 inches wide and under are packaged in individually-labeled inner dispenser packs for convenience, protection and to reduce waste.



The Elkay Way



A Leading Competitor

ASK YOURSELF: Which of these "identical" products would your customer rather package their products in?

4.1 SIDE GUSSET UTILITY BAGS (CONTINUED)

| ITEM | SIZE | MATERIAL | GAUGE (MIL) | QTY /CASE | APPROX LBS/M | CUBE |
|------------|----------------|----------|-------------|-----------|--------------|------|
| 10G-104024 | 10 X 4 X 24 | LDPE | 1.0 | 1000 | 22.4 | 0.63 |
| 15G-104024 | 10 X 4 X 24 | LDPE | 1.5 | 1000 | 33.6 | 0.95 |
| 20G-104024 | 10 X 4 X 24 | LDPE | 2.0 | 1000 | 44.8 | 1.21 |
| 20G-104026 | 10 X 4 X 26 | LDPE | 2.0 | 500 | 48.6 | 0.38 |
| 8G105016 | 10 X 5 X 16 | LLDPE | 0.8 | 1000 | 12.8 | 0.33 |
| 8G106022 | 10 X 6 X 22 | LLDPE | 0.7 | 1000 | 16.5 | 0.38 |
| 15G-108020 | 10 X 8 X 20 | LDPE | 1.5 | 1000 | 36.0 | 0.85 |
| 8G108024 | 10 X 8 X 24 | LLDPE | 0.85 | 500 | 24.5 | 0.43 |
| 10G-108024 | 10 X 8 X 24 | LDPE | 1.0 | 500 | 28.8 | 0.43 |
| 12G-108024 | 10 X 8 X 24 | LDPE | 1.25 | 500 | 36.0 | 0.84 |
| 15G-108024 | 10 X 8 X 24 | LDPE | 1.5 | 500 | 43.2 | 1.00 |
| 20G-108024 | 10 X 8 X 24 | LDPE | 2.0 | 500 | 57.6 | 0.70 |
| 10G-111021 | 11½ X 10 X 21½ | LDPE | 1.0 | 1000 | 30.8 | 0.72 |
| 20G-120426 | 12 X 4 X 26 | LDPE | 2.0 | 500 | 55.5 | 0.80 |
| 07G-126024 | 12 X 6 X 24 | LLDPE | 0.75 | 500 | 21.6 | 0.42 |
| 12G-120624 | 12 X 6 X 24 | LDPE | 1.25 | 500 | 36.0 | 0.54 |
| 15G-126029 | 12 X 6 X 29 | LDPE | 1.5 | 500 | 52.2 | 0.70 |
| 15G-128020 | 12 X 8 X 20 | LDPE | 1.5 | 1000 | 40.0 | 1.01 |
| 20G-128020 | 12 X 8 X 20 | LDPE | 2.0 | 500 | 53.3 | 0.70 |
| 15G-128024 | 12 X 8 X 24 | LDPE | 1.5 | 500 | 48.0 | 0.67 |
| 20G-128024 | 12 X 8 X 24 | LDPE | 2.0 | 500 | 64.0 | 0.83 |
| 8G128030 | 12 X 8 X 30 | LLDPE | 0.85 | 500 | 34.0 | 0.56 |
| 10G-128030 | 12 X 8 X 30 | LDPE | 1.0 | 500 | 40.0 | 0.56 |
| 12G-128030 | 12 X 8 X 30 | LDPE | 1.25 | 500 | 50.0 | 0.69 |
| 15G-128030 | 12 X 8 X 30 | LDPE | 1.5 | 500 | 60.0 | 0.77 |
| 20G-128030 | 12 X 8 X 30 | LDPE | 2.0 | 500 | 80.0 | 1.00 |
| 15G-121024 | 12 X 10 X 24 | LDPE | 1.5 | 500 | 52.8 | 0.67 |
| 10G150924 | 15 X 9 X 24 | LDPE | 1.0 | 500 | 38.4 | 0.56 |
| 15G-159024 | 15 X 9 X 24 | LDPE | 1.5 | 500 | 57.6 | 0.84 |
| 15G-159032 | 15 X 9 X 32 | LDPE | 1.5 | 500 | 76.8 | 1.05 |
| 20G-159032 | 15 X 9 X 32 | LDPE | 2.0 | 250 | 102.4 | 0.75 |
| 10G-151118 | 15 X 11 X 18 | LDPE | 1.0 | 1000 | 31.2 | 0.78 |
| 15G-161224 | 16 X 12 X 24 | LDPE | 1.5 | 500 | 67.2 | 0.89 |
| 15G-161230 | 16 X 12 X 30 | LDPE | 1.5 | 500 | 84.0 | 1.04 |
| 15G-161436 | 16 X 14 X 36 | LDPE | 1.5 | 250 | 108.0 | 0.65 |
| 20G-161436 | 16 X 14 X 36 | LDPE | 2.0 | 250 | 144.0 | 0.90 |
| 15G-181432 | 18 X 14 X 32 | LDPE | 1.5 | 250 | 102.4 | 0.70 |
| 15G-181640 | 18 X 16 X 40 | LDPE | 1.5 | 250 | 136.0 | 0.89 |
| 20G-181640 | 18 X 16 X 40 | LDPE | 2.0 | 250 | 181.3 | 1.12 |
| 15G-201826 | 20 X 18 X 26 | LDPE | 1.5 | 500 | 98.8 | 1.09 |
| 12G-201830 | 20 X 18 X 30 | LDPE | 1.25 | 500 | 95.0 | 1.11 |
| 15G-201830 | 20 X 18 X 30 | LDPE | 1.5 | 250 | 114.0 | 0.68 |
| 20G-201830 | 20 X 18 X 30 | LDPE | 2.0 | 200 | 152.0 | 0.91 |
| 8G214035 | 21 X 4 X 35 | LLDPE | 0.8 | 250 | 46.8 | 1.40 |
| 15G-242048 | 24 X 20 X 48 | LDPE | 1.5 | 200 | 211.2 | 1.04 |
| 20G-242048 | 24 X 20 X 48 | LDPE | 2.0 | 100 | 281.6 | 1.35 |
| 20G-264042 | 26 X 4 X 42 | LDPE | 2.0 | 200 | 168.0 | 0.89 |

SECTION 5 POLYPROPYLENE BAGS

5.1 POLYPROPYLENE SEAL TOP BAGS WITH HANG HOLE



- Vapor and moisture barrier extends product shelf-life
- Exceptional clarity for outstanding product presentation
- Hang hole for product display or organization

| ITEM | SIZE | MATERIAL | GAUGE (MIL) | QTY /CASE | APPROX LBS/M | CUBE |
|---------|---------|----------|-------------|-----------|--------------|------|
| FP20305 | 3 X 5 | PP | 2.0 | 1000 | 2.5 | 0.13 |
| FP20406 | 4 X 6 | PP | 2.0 | 1000 | 4.3 | 0.19 |
| FP20507 | 5 X 7 | PP | 2.0 | 1000 | 7.3 | 0.26 |
| FP20508 | 5 X 8 | PP | 2.0 | 1000 | 7.3 | 0.27 |
| FP20606 | 6 X 6 | PP | 2.0 | 1000 | 6.2 | 0.26 |
| FP20608 | 6 X 8 | PP | 2.0 | 1000 | 8.4 | 0.32 |
| FP20609 | 6 X 9 | PP | 2.0 | 1000 | 8.7 | 0.35 |
| FP20810 | 8 X 10 | PP | 2.0 | 1000 | 12.8 | 0.49 |
| FP20912 | 9 X 12 | PP | 2.0 | 1000 | 18.0 | 0.63 |
| FP21012 | 10 X 12 | PP | 2.0 | 1000 | 23.5 | 0.70 |

5.2 POLYPROPYLENE SIDE GUSSET BAGS AND BOTTOM GUSSET BAGS



- Vapor and moisture barrier extends product shelf-life
- Exceptional clarity for outstanding product presentation
- Expands to accommodate bulky items easily

| ITEM | SIZE | MATERIAL | GAUGE (MIL) | QTY /CASE | APPROX LBS/M | CUBE |
|---------------------------------------|---------------|----------|-------------|-----------|--------------|------|
| POLYPROPYLENE SIDE GUSSET BAGS | | | | | | |
| P12G025365 | 2½ X ¾ X 6½ | PP | 1.5 | 2000 | 2.1 | 0.16 |
| P12G0251475 | 2½ X 1¼ X 7½ | PP | 1.5 | 2000 | 2.8 | 0.17 |
| P12G03138 | 3 X 1¼ X 8¼ | PP | 1.5 | 2000 | 3.9 | 0.32 |
| P12G035219 | 3½ X 2¼ X 9¾ | PP | 1.5 | 2000 | 5.6 | 0.47 |
| P12G0452310 | 4½ X 2¾ X 10¾ | PP | 1.5 | 2000 | 7.8 | 0.45 |
| P12G045313 | 4½ X 3¼ X 13 | PP | 1.5 | 2000 | 10.1 | 0.56 |
| P12G054515 | 5 X 4½ X 15 | PP | 1.2 | 1000 | 11.4 | 0.33 |
| P15G054515 | 5 X 4½ X 15 | PP | 1.5 | 1000 | 14.3 | 0.79 |
| P12G054518 | 5 X 4½ X 18 | PP | 1.2 | 1000 | 13.7 | 0.43 |
| P12G050313 | 5¼ X 3 X 13 | PP | 1.5 | 1000 | 10.8 | 0.33 |
| P15G08315 | 8 X 3 X 15 | PP | 1.5 | 1000 | 14.4 | 0.39 |
| P15G084018 | 8 X 4 X 18 | PP | 1.5 | 1000 | 21.6 | 0.57 |
| P12G108024 | 10 X 8 X 24 | PP | 1.2 | 500 | 17.3 | 0.55 |
| P15G108024 | 10 X 8 X 24 | PP | 1.5 | 500 | 14.4 | 0.56 |
| P15G120830 | 12 X 8 X 30 | PP | 1.5 | 500 | 30.0 | 0.98 |

5.2 POLYPROPYLENE SIDE GUSSET BAGS AND BOTTOM GUSSET BAGS (CONTINUED)

| ITEM | SIZE | MATERIAL | GAUGE (MIL) | QTY /CASE | APPROX LBS/M | CUBE |
|---|---------------|----------|-------------|-----------|--------------|------|
| POLYPROPYLENE BOTTOM GUSSET BAGS | | | | | | |
| P12F0822+3BG | 8 X 22 + 3BG | PP | 1.4 | 1000 | 17.5 | 0.47 |
| P12F0826+3BG | 8 X 26 + 3BG | PP | 1.4 | 1000 | 20.5 | 0.54 |
| P12F0913+4BG | 9 X 13 + 4BG | PP | 1.4 | 1000 | 12.6 | 0.37 |
| P12F0916+4BG | 9 X 16 + 4BG | PP | 1.4 | 1000 | 15.2 | 0.37 |
| P12F01113+4BG | 11 X 13 + 4BG | PP | 1.4 | 1000 | 15.4 | 0.45 |
| P12F01120+4BG | 11 X 20 + 4BG | PP | 1.4 | 1000 | 22.6 | 0.62 |
| P12F1216+4BG | 12 X 16 + 4BG | PP | 1.4 | 1000 | 20.2 | 0.54 |
| P12F1522+4BG | 15 X 22 + 4BG | PP | 1.4 | 500 | 33.7 | 0.91 |

5.3 POLYPROPYLENE FLAT BAGS



- Vapor and moisture barrier extends product shelf-life
- Exceptional clarity for outstanding product presentation

| ITEM | SIZE | MATERIAL | GAUGE (MIL) | QTY /CASE | APPROX LBS/M | CUBE |
|-----------|----------|----------|-------------|-----------|--------------|------|
| P12F0304 | 3 X 4 | PP | 1.5 | 10,000 | 1.2 | 0.32 |
| P12F0355 | 3 X 5½ | PP | 1.5 | 10,000 | 1.6 | 0.26 |
| P12F0406 | 4 X 6 | PP | 1.5 | 5000 | 2.4 | 0.29 |
| P12F0436 | 4¼ X 6¼ | PP | 1.5 | 5000 | 3.2 | 0.38 |
| P12F0438 | 4¼ X 8¼ | PP | 1.5 | 2000 | 3.9 | 0.39 |
| P12F0537 | 5¼ X 7¼ | PP | 1.5 | 2000 | 4.4 | 0.21 |
| P12F0539 | 5¼ X 9¼ | PP | 1.5 | 2000 | 5.6 | 0.27 |
| P12F0610 | 6¼ X 10¼ | PP | 1.5 | 2000 | 7.2 | 0.34 |
| P12F07513 | 7½ X 13 | PP | 1.5 | 1000 | 9.7 | 0.24 |
| P12F0810 | 8 X 10 | PP | 1.5 | 1000 | 8.0 | 0.19 |
| P12F0912 | 9 X 12 | PP | 1.5 | 1000 | 10.8 | 0.22 |
| P12F1012 | 10 X 12 | PP | 1.5 | 1000 | 12.0 | 0.28 |
| P12F1218 | 12 X 18 | PP | 1.5 | 1000 | 21.6 | 0.48 |
| P12F1420 | 14 X 20 | PP | 1.5 | 1000 | 28.0 | 0.54 |

ELKAY® CERTIFICATIONS

- ISO 9001: 2008* Registered since 2004
- Canadian Food Inspection Agency, CFIA Approved Packaging Materials
- Certified by Customs-Trade Partnership Against Terrorism, C-TPAT Since 2007
- Annual 3rd Party Food Safety Audits

See how these certifications help you and find out more at: <http://www.elkayplastics.com/about-elkay/elkay-certifications>

*Los Angeles, Atlanta and Chicago divisions

SECTION 6 POLYPROPYLENE CO-EXTRUDED BAGS

6.1 POLYPROPYLENE CO-EXTRUDED SIDE GUSSET BAGS



- Outstanding temperature range allows these bags to go from the freezer to the microwave
- Superior strength for resistance to tearing and puncture

| ITEM | SIZE | MATERIAL | GAUGE (MIL) | QTY /CASE | APPROX LBS/M | CUBE |
|------------|--------------|----------|-------------|-----------|--------------|------|
| P10G040208 | 4 X 2 X 8 | PPE | 1.0 | 2000 | 3.2 | 0.40 |
| P10G054515 | 5 X 4½ X 15 | PPE | 1.0 | 1000 | 9.5 | 0.21 |
| P10G054518 | 5 X 4½ X 18 | PPE | 1.0 | 1000 | 11.4 | 0.25 |
| P10G054529 | 5 X 4½ X 29 | PPE | 1.0 | 1000 | 18.4 | 0.40 |
| P8G055416 | 5½ X 4¼ X 16 | PPE | 0.8 | 1000 | 8.8 | 0.22 |
| P8G055419 | 5½ X 4¼ X 19 | PPE | 0.8 | 1000 | 10.4 | 0.25 |
| P8G08315 | 8 X 3 X 15 | PPE | 0.8 | 1000 | 8.8 | 0.28 |
| P10G083015 | 8 X 3 X 15 | PPE | 1.0 | 1000 | 11.2 | 0.31 |
| P10G084018 | 8 X 4 X 18 | PPE | 1.0 | 1000 | 14.4 | 0.37 |
| P8G10420 | 10 X 4 X 20 | PPE | 0.8 | 1000 | 14.9 | 0.28 |
| P10G108024 | 10 X 8 X 24 | PPE | 1.0 | 500 | 28.9 | 0.31 |
| P10G128030 | 12 X 8 X 30 | PPE | 1.0 | 500 | 40.1 | 0.45 |

6.2 POLYPROPYLENE CO-EXTRUDED BOTTOM GUSSET BAGS



- Outstanding temperature range allows these bags to go from the freezer to the microwave
- Superior strength for resistance to tearing and puncture

| ITEM | SIZE | MATERIAL | GAUGE (MIL) | QTY /CASE | APPROX LBS/M | CUBE |
|-----------------|---------------|----------|-------------|-----------|--------------|------|
| P10F0822 + 3BG | 8 X 22 + 3BG | PPE | 1.0 | 1000 | 12.6 | 0.29 |
| P10F0826 + 3BG | 8 X 26 + 3BG | PPE | 1.0 | 1000 | 14.7 | 0.34 |
| P10F0913 + 4BG | 9 X 13 + 4BG | PPE | 1.0 | 1000 | 9.0 | 0.20 |
| P10F0916 + 4BG | 9 X 16 + 4BG | PPE | 1.0 | 1000 | 10.8 | 0.24 |
| P10F01113 + 4BG | 11 X 13 + 4BG | PPE | 1.0 | 1000 | 11.0 | 0.39 |
| P10F01120 + 4BG | 11 X 20 + 4BG | PPE | 1.0 | 1000 | 16.2 | 0.36 |
| P10F1216 + 4BG | 12 X 16 + 4BG | PPE | 1.0 | 1000 | 14.4 | 0.32 |
| P10F1522 + 4BG | 15 X 22 + 4BG | PPE | 1.0 | 500 | 24.1 | 0.53 |

6.3 SPECIALTY TAKE OUT BAG (FAST TAKE®)



- High clarity for excellent product presentation
- Excellent choice for 'Grab and Go' meals

| ITEM | SIZE | MATERIAL | GAUGE (MIL) | QTY /CASE | APPROX LBS/CASE | CUBE |
|--------|---------------------|----------|-------------|-----------|-----------------|------|
| TO6484 | 6¼ X 4¼ X 8½ + 4¼BG | PPE | 3.0 | 200 | 9.7 | 0.34 |

6.4 RESEALABLE LIP & TAPE SANDWICH BAGS



- Excellent clarity for outstanding product presentation
- Lip and tape closure strong, secure and can be used multiple times

| ITEM | SIZE | MATERIAL | GAUGE (MIL) | QTY /CASE | APPROX LBS/M | CUBE |
|----------|--------------------|----------|-------------|-----------|--------------|------|
| PSB551 | 5 X 5 + 1½LP | PPE | 1.25 | 1000 | 2.9 | 0.08 |
| PSB551CK | 5 X 5 + 1BG + 1½LP | PP | 1.5 | 1000 | 3.1 | 0.11 |
| PSB661 | 6 X 6 + 1LP | PPE | 1.25 | 1000 | 3.2 | 0.10 |
| PSB773 | 7 X 7 + 3LP | PPE | 1.25 | 1000 | 5.0 | 0.15 |
| PSB1083 | 10 X 8 + 3LP | PPE | 1.25 | 1000 | 7.9 | 0.23 |
| PSB1473 | 14 X 7 + 3LP | PPE | 1.25 | 1000 | 9.9 | 0.28 |

SECTION 7 DELI BAGS

7.1 HIGH DENSITY FLIP TOP SADDLE PACK DELI BAGS



- Flip top closure for fast and easy manual filling
- 200 bags/bundle

| ITEM | SIZE | MATERIAL | GAUGE (MIL) | QTY /CASE | APPROX LBS/M | CUBE |
|-----------|---|----------|-------------|-----------|--------------|------|
| DP3510 | 3½ X 10 + 1LP + 2FB | HDPE | 0.5 | 2000 | 1.4 | 0.14 |
| DP6562 | 6½ X 6¼ + 1LP + 2FB | HDPE | 0.5 | 2000 | 1.8 | 0.17 |
| DP0710 | 7 X 10 + 1LP + 2FB | HDPE | 0.5 | 2000 | 2.8 | 0.25 |
| DP7575 | 7½ X 7½ + 1LP + 2FB | HDPE | 0.5 | 2000 | 2.4 | 0.22 |
| DP8585 | 8½ X 8½ + 1LP + 2FB | HDPE | 0.5 | 2000 | 3.0 | 0.27 |
| DP10585 | 10 X 8 + 1LP + 2FB | HDPE | 0.5 | 2000 | 3.2 | 0.33 |
| DP10585P | 10 X 8 + 1LP + 2FB Printed "Fresh To Go" (One Color) | HDPE | 0.5 | 2000 | 3.2 | 0.33 |
| DP5555PCK | 5½ X 5½ + 1½FB Printed "Cookie Bag" (One Color) | HDPE | 0.6 | 2000 | 1.8 | 0.12 |

7.2 LOW DENSITY SEAL TOP SADDLE PACK DELI BAGS



- Seal top closure keeps the customer's purchase fresh and secure
- 100 bags/bundle

| ITEM | SIZE | MATERIAL | GAUGE (MIL) | QTY /CASE | APPROX LBS/M | CUBE |
|----------|--|----------|-------------|-----------|--------------|------|
| FD0908SP | 9 X 8 | LDPE | 1.2 | 1000 | 11.0 | 0.49 |
| DP9758 | 10 X 8 Printed "Fresh To Go" (One Color) | LDPE | 1.25 | 1000 | 12.8 | 0.21 |
| DP1083C | 10 X 8 Printed "Fresh To Go" (Three Colors) | LDPE | 1.2 | 1000 | 14.4 | 0.46 |
| DP108 | 10 X 8 Printed "Fresh To Go" (Four Colors) | LDPE | 1.5 | 1000 | 14.7 | 0.64 |
| FD1058SP | 10½ X 8 | LDPE | 1.5 | 1000 | 13.2 | 0.56 |

7.3 SLIDE SEAL DELI BAGS



- Slide seal closure for customer convenience
- Most items are printed "Fresh To Go" (1C/1S)
- 50 bags/bundle

| ITEM | SIZE | MATERIAL | GAUGE (MIL) | QTY /CASE | APPROX LBS/M | CUBE |
|------------|---------|----------|-------------|-----------|--------------|------|
| FSL108* | 10 X 8 | LDPE | 1.5 | 1000 | 12.8 | 0.69 |
| FSL108P | 10 X 8 | LDPE | 1.0 | 1000 | 8.1 | 0.52 |
| FSL10815P | 10 X 8 | LDPE | 1.5 | 1000 | 12.8 | 0.69 |
| FSL1058P | 10½ X 8 | LDPE | 2.0 | 500 | 11.0 | 1.38 |
| FSL1058SPP | 10½ X 8 | LDPE | 1.0 | 1000 | 13.4 | 0.97 |

FLAT PACKED SLIDE SEAL DELI BAG

| | | | | | | |
|----------|---------|------|-----|------|-------|------|
| FSL1058* | 10½ X 8 | LDPE | 2.0 | 1000 | 19.16 | 1.05 |
|----------|---------|------|-----|------|-------|------|

* Unprinted



- Polypropylene material provides excellent strength and clarity
- Economical alternative to pricier LDPE bags
- Convenient slide seal closure
- Available printed or unprinted

POLYPROPYLENE SLIDE SEAL DELI BAGS

| | | | | | | |
|-----------|--------|----|-----|------|-----|------|
| FSL108PP* | 10 X 8 | PP | 0.8 | 1000 | 8.7 | 0.64 |
| FSL108PPP | 10 X 8 | PP | 0.8 | 1000 | 8.7 | 0.64 |

* Unprinted

7.4 SADDLE PACK STANDS

- Steady metal stands for quick filling of bags
- Flat metal or sturdy wire



| ITEM | SIZE | QTY /CASE | APPROX LBS | CUBE |
|--------------|--------------|-----------|------------|------|
| DPSTAND | 8 X 6 X 12¼ | 1 each | 2.6 | 0.49 |
| DPWSTAND | 6 X 6¼ X 11¾ | 1 each | 1.6 | 0.39 |
| DELIWIREHOOK | 7½ X 1½ | 100 | 8.0 | 0.60 |

ELKAY HAS EIGHT LOCATIONS TO SERVE YOU



- Elkay has eight strategically located distribution centers to help get your orders to you faster!

- Each division is staffed with local customer care personnel to service your account.

SECTION 8 WRAPS & SHEETS

8.1 BOPP POLY WRAPPING SHEETS



- Ideal for wrapping foods such as sandwiches, wraps, and subs as well as other items such as candies and flowers

| ITEM | SIZE | MATERIAL | GAUGE (MIL) | QTY /CASE | APPROX LBS/CASE | CUBE |
|-------------|---------|----------|-------------|-----------|-----------------|------|
| BOPP10F1414 | 14 X 14 | BOPP | 1.0 | 1000 | 6.5 | 0.18 |
| BOPP8F1515 | 15 X 15 | BOPP | 0.8 | 1000 | 6.0 | 0.16 |
| BOPP10F1616 | 16 X 16 | BOPP | 1.0 | 1000 | 8.5 | 0.23 |
| BOPP10F1818 | 18 X 18 | BOPP | 1.0 | 1000 | 10.8 | 0.29 |
| BOPP10F2020 | 20 X 20 | BOPP | 1.0 | 1000 | 13.3 | 0.36 |

8.2 WRAP-EZE® POP-UP SHEETS



- Economical alternative to paper pick up sheets
- Greaseproof, non-absorbent and waterproof
- 'Pop-up' dispenser packs of 1000 sheets per dispenser pack

| ITEM | SIZE | MATERIAL | GAUGE (MIL) | QTY /CASE | APPROX LBS/CASE | CUBE |
|------|----------|----------|-------------|-----------|-----------------|------|
| K-6 | 6 X 10% | HDPE | 0.45 | 10,000 | 10.0 | 0.46 |
| K-8 | 8 X 10% | HDPE | 0.45 | 10,000 | 13.3 | 0.60 |
| K-10 | 10 X 10% | HDPE | 0.45 | 10,000 | 16.6 | 0.72 |
| K-12 | 12 X 10% | HDPE | 0.45 | 10,000 | 19.9 | 1.04 |
| K-15 | 15 X 10% | HDPE | 0.45 | 10,000 | 24.9 | 1.04 |

SECTION 9 BAKERY BAGS

9.1 PRINTED HIGH DENSITY BAKERY BAGS



- Excellent for any retail bakery operation
- High-slip interior surface for quick and easy filling
- Printed 1C/1S

| ITEM | SIZE | MATERIAL | GAUGE (MIL) | QTY /CASE | APPROX LBS/CASE | CUBE |
|-------------|-------------|----------|-------------|-----------|-----------------|------|
| BK5311HI-DP | 5 X 3 X 11 | HDPE | 1.0 | 1000 | 5.9 | 0.22 |
| BK6412HI-DP | 6 X 4 X 12 | HDPE | 1.0 | 1000 | 8.0 | 0.27 |
| BK6414HI-DP | 6 X 4 X 14½ | HDPE | 1.0 | 1000 | 9.7 | 0.33 |
| BK8516HI-DP | 8½ X 5 X 16 | HDPE | 1.0 | 1000 | 14.4 | 0.50 |

9.2 PRINTED HIGH DENSITY BAKERY BAGS ON PLASTIC HEADER



- Header pack for easy placement and dispensing
- High-slip interior surface for quick and easy filling
- 200/header pack
- Printed 1C/1S

| ITEM | SIZE | MATERIAL | GAUGE (MIL) | QTY /CASE | APPROX LBS/CASE | CUBE |
|-------------|---------------|----------|-------------|-----------|-----------------|------|
| BK1217HI-DP | 12 X 17 + 2LP | HDPE | 0.6 | 2000 | 17.3 | 0.49 |

SECTION 10 BUN PAN AND RACK COVERS

10.1 BUN PAN AND BUN RACK COVERS



- Choose from economical HDPE or LDPE material
- Packed on convenient rolls
- Some items include twist ties

| ITEM | SIZE | MATERIAL | GAUGE (MIL) | QTY /ROLL | APPROX LBS/ROLL | CUBE |
|-----------------|---------------------------|----------|-------------|-----------|-----------------|------|
| ON ROLLS | | | | | | |
| BOR21635* | 21 X 6 X 35 | HDPE | 0.6 | 200 | 7.6 | 0.43 |
| BOR21635LD | 21 X 6 X 35 | LDPE | 0.75 | 200 | 9.5 | 0.41 |
| BOR2636 | 26 X 36 | LDPE | 1.5 | 250 | 23.5 | 0.74 |
| BOR2737HD* | 27 X 37 | HDPE | 0.5 | 200 | 6.7 | 0.43 |
| BRC8G312272 | 31 X 22 X 72 (Rack Cover) | LDPE | 0.75 | 100 | 19.1 | 0.76 |
| BOR5280 | 52 X 80 (Rack Cover) | HDPE | 0.6 | 50 | 8.3 | 0.33 |

*These items include twist ties

| ITEM | SIZE | MATERIAL | GAUGE (MIL) | QTY /ROLL | APPROX LBS/ROLL | CUBE |
|--------------------|-------------|----------|-------------|-----------|-----------------|------|
| FLAT PACKED | | | | | | |
| BPC10G216035 | 21 X 6 X 35 | HDPE | 0.6 | 200 | 7.8/cs | 0.33 |
| BPRC12F5280 | 52 X 80 | HDPE | 0.6 | 50 | 8.7/cs | 0.30 |

SECTION 11 WICKET BAGS

11.1 BREAD BAGS ON WICKET



- Popular bread bag sizes
- 250 bags/wicket

| ITEM | SIZE | MATERIAL | GAUGE (MIL) | QTY /CASE | APPROX LBS/M | CUBE |
|---------------|-----------------------|----------|-------------|-----------|--------------|------|
| 10BG-097515W | 9¾ X 15 + 4½BG + 1½LP | LDPE | 1.0 | 1000 | 11.7 | 0.36 |
| 10F-1016+4BGW | 10 X 16 + 4BG + 1½LP | LDPE | 1.0 | 1000 | 11.2 | 0.33 |
| 10F-1114+4BGW | 11 X 14 + 4BG + 1½LP | LDPE | 1.0 | 1000 | 11.7 | 0.33 |
| 10F-1118+4BGW | 11 X 18 + 4BG + 1½LP | LDPE | 1.0 | 1000 | 14.5 | 0.41 |
| 10F-1420+4BGW | 14 X 20 + 4BG + 1½LP | LDPE | 1.0 | 500 | 22.2 | 0.30 |

Go to www.elkayplastics.com for the most current product information.

Now MOBILE AND TABLET-FRIENDLY so you can get more done while on the go!



11.2 POLYPROPYLENE CO-EXTRUDED BOTTOM GUSSET BAGS ON WICKET



- Superior strength for resistance to tearing and puncture
- Popular bread bag sizes
- 250 bags/wicket

| ITEM | SIZE | MATERIAL | GAUGE (MIL) | QTY /CASE | APPROX LBS/M | CUBE |
|----------------|----------------------|----------|-------------|-----------|--------------|------|
| P8F0822+3BGW | 8 X 22 + 3BG + 1½LP | PPE | 0.8 | 1000 | 10.4 | 0.33 |
| P8F0913+4BGW | 9 X 13 + 4BG + 1½LP | PPE | 0.8 | 1000 | 7.6 | 0.69 |
| P10F0914+4BGW | 9 X 14 + 4BG + 1½LP | PPE | 1.0 | 1000 | 10.1 | 0.32 |
| P8F0916+4BGW | 9 X 16 + 4BG + 1½LP | PPE | 0.8 | 1000 | 9.0 | 0.27 |
| P8F0928+3BGW | 9 X 28½ + 3BG + 1½LP | PPE | 0.8 | 1000 | 14.8 | 0.42 |
| P8F01113+4BGW | 11 X 13 + 4BG + 1½LP | PPE | 0.8 | 1000 | 9.3 | 0.30 |
| P10F-1114+4BGW | 11 X 14 + 4BG + 1½LP | PPE | 1.0 | 1000 | 12.3 | 0.38 |
| P8F1118+4BGW | 11 X 18 + 4BG + 1½LP | PPE | 0.8 | 1000 | 12.2 | 0.40 |
| P8F1216+4BGW | 12 X 16 + 4BG + 1½LP | PPE | 0.8 | 1000 | 12.0 | 0.88 |

11.3 MICRO-PERFORATION POLYPROPYLENE BREAD BAGS ON WICKET



- Outstanding clarity
- Micro perforations for crisp bread
- 50 bags/wicket dispenser

| ITEM | SIZE | MATERIAL | GAUGE (MIL) | QTY /CASE | APPROX LBS/M | CUBE |
|-----------|----------------|----------|-------------|-----------|--------------|------|
| PPF-0628M | 6 X 28 + 1½LP | PP | 1.0 | 1000 | 13.8 | 0.46 |
| PPF-1016M | 10 X 16 + 1½LP | PP | 1.0 | 1000 | 13.4 | 0.46 |
| PPF-1120M | 11 X 20 + 1½LP | PP | 1.0 | 1000 | 18.3 | 0.64 |
| PPF-1324M | 13 X 24 + 1½LP | PP | 1.0 | 1000 | 25.7 | 1.28 |

SECTION 12 MEAT, POULTRY AND SEAFOOD BAGS

12.1 PRINTED "SAFE HANDLING" BAGS



- Used by butchers, etc. in retail environment
- Printed with safe handling guidelines for various meats and poultry in English and Spanish
- Printed 1C/1S

| ITEM | SIZE | MATERIAL | GAUGE (MIL) | QTY /CASE | APPROX LBS/M | CUBE |
|------------|------------|----------|-------------|-----------|--------------|------|
| SFH-063015 | 6 X 3 X 15 | LDPE | 1.5 | 1000 | 13.5 | 0.34 |
| SFH-084018 | 8 X 4 X 18 | LDPE | 1.5 | 1000 | 21.6 | 0.55 |

12.2 PRINTED "SAFE HANDLING" BAGS ON PLASTIC HEADER



- Printed with safe handling guidelines for various meats and poultry
- 100/header pack
- Printed 1C/1S

| ITEM | SIZE | MATERIAL | GAUGE (MIL) | QTY /CASE | APPROX LBS/M | CUBE |
|---------|---------------|----------|-------------|-----------|--------------|------|
| SFH0915 | 9 X 15 + 2LP | LDPE | 1.5 | 1000 | 14.2 | 0.39 |
| SFH1218 | 12 X 18 + 2LP | LDPE | 1.5 | 1000 | 22.5 | 0.58 |

12.3 PRINTED SEAFOOD BAGS ON PLASTIC HEADER



- Header pack for easy placement and dispensing
- Printed "The Sea's Very Best" in 2 colors, 1 side
- 100/header pack

| ITEM | SIZE | MATERIAL | GAUGE (MIL) | QTY /CASE | APPROX LBS/CASE | CUBE |
|---------|---------------|----------|-------------|-----------|-----------------|------|
| SEA0915 | 9 X 15 + 2LP | LDPE | 1.0 | 1000 | 9.6 | 0.28 |
| SEA1218 | 12 X 18 + 2LP | LDPE | 1.0 | 1000 | 15.2 | 1.33 |

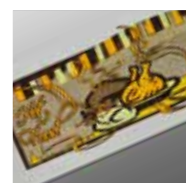
12.4 BULK DELI MEAT SLIDE SEAL BAG BLUE TINT



- Ideal bags for storing bulk deli meats
- Write-on strip to identify contents
- Outer pouch for scale labels

| ITEM | SIZE | MATERIAL | GAUGE (MIL) | QTY /CASE | APPROX LBS/CASE | CUBE |
|---|---------------|----------|-------------|-----------|-----------------|------|
| FSL1414+6BG (Write-on Strip and Outer Pouch) | 14 X 14 + 6BG | LDPE | 3.0 | 200 | 12.0 | 0.49 |

12.5 SPECIALTY TAKE OUT BAGS: HOT FOOD BAG



- Protects customers from hot foods, liquids, and greases
- Printed "Hot Food" (2C/1S)
- #8 size bag

| ITEM | SIZE | MATERIAL | GAUGE (MIL) | QTY /CASE | APPROX LBS/CASE | CUBE |
|-----------|------------|----------|-------------|-----------|-----------------|------|
| TO6414HOT | 6 X 4 X 14 | HDPE | 1.25 | 1000 | 11.7 | 0.36 |

SECTION 13 VACUUM POUCHES

13.1 CO-EXTRUDED VACUUM POUCHES



- Cost-effective co-extruded material
- Excellent protection with stretchability that conforms to product shape

| ITEM | SIZE | MATERIAL | GAUGE (MIL) | QTY /CASE | APPROX LBS/M | CUBE |
|-----------|---------|------------|-------------|-----------|--------------|------|
| 30NVC0608 | 6 X 8 | LDPE/Nylon | 3.0 | 1000 | 10.4 | 0.39 |
| 30NVC0610 | 6 X 10 | LDPE/Nylon | 3.0 | 1000 | 12.6 | 0.39 |
| 30NVC0612 | 6 X 12 | LDPE/Nylon | 3.0 | 1000 | 15.2 | 0.38 |
| 30NVC0615 | 6 X 15 | LDPE/Nylon | 3.0 | 1000 | 18.9 | 0.66 |
| 30NVC0709 | 7 X 9 | LDPE/Nylon | 3.0 | 1000 | 13.5 | 0.42 |
| 30NVC0810 | 8 X 10 | LDPE/Nylon | 3.0 | 1000 | 16.8 | 0.68 |
| 30NVC0812 | 8 X 12 | LDPE/Nylon | 3.0 | 1000 | 20.2 | 0.85 |
| 30NVC0815 | 8 X 15 | LDPE/Nylon | 3.0 | 1000 | 25.2 | 0.80 |
| 30NVC1010 | 10 X 10 | LDPE/Nylon | 3.0 | 1000 | 20.4 | 0.78 |
| 30NVC1012 | 10 X 12 | LDPE/Nylon | 3.0 | 1000 | 25.2 | 0.85 |
| 30NVC1013 | 10 X 13 | LDPE/Nylon | 3.0 | 1000 | 27.4 | 0.39 |
| 30NVC1015 | 10 X 15 | LDPE/Nylon | 3.0 | 1000 | 31.6 | 0.81 |
| 30NVC1022 | 10 X 22 | LDPE/Nylon | 3.0 | 500 | 46.0 | 0.78 |
| 30NVC1212 | 12 X 12 | LDPE/Nylon | 3.0 | 1000 | 30.5 | 0.78 |
| 30NVC1214 | 12 X 14 | LDPE/Nylon | 3.0 | 1000 | 34.8 | 0.78 |
| 30NVC1215 | 12 X 15 | LDPE/Nylon | 3.0 | 500 | 37.9 | 0.39 |
| 30NVC1216 | 12 X 16 | LDPE/Nylon | 3.0 | 500 | 40.4 | 0.62 |
| 30NVC1218 | 12 X 18 | LDPE/Nylon | 3.0 | 500 | 45.5 | 0.39 |
| 30NVC1416 | 14 X 16 | LDPE/Nylon | 3.0 | 500 | 47.1 | 0.67 |
| 30NVC1420 | 14 X 20 | LDPE/Nylon | 3.0 | 500 | 58.9 | 0.80 |
| 30NVC1620 | 16 X 20 | LDPE/Nylon | 3.0 | 500 | 67.3 | 0.94 |
| 30NVC1624 | 16 X 24 | LDPE/Nylon | 3.0 | 500 | 84.2 | 0.89 |
| 30NVC1626 | 16 X 26 | LDPE/Nylon | 3.0 | 250 | 87.5 | 0.66 |
| 30NVC1828 | 18 X 28 | LDPE/Nylon | 3.0 | 250 | 106.5 | 0.66 |

13.2 LAMINATED POLY-NYLON VACUUM POUCHES



- Highest level of clarity, impact resistance, and strength with good flexibility
- Excellent barrier properties for oxygen and moisture vapor transmission
- Freezable and boilable

| ITEM | SIZE | MATERIAL | GAUGE (MIL) | QTY /CASE | APPROX LBS/M | CUBE |
|-----------|---------|------------|-------------|-----------|--------------|------|
| 30NV02510 | 2½ X 10 | Poly-Nylon | 3.0 | 2000 | 5.3 | 0.21 |
| 30NV0406 | 4 X 6 | Poly-Nylon | 3.0 | 1000 | 5.0 | 0.12 |
| 30NV0408 | 4 X 8 | Poly-Nylon | 3.0 | 1000 | 6.7 | 0.16 |
| 30NV0507 | 5 X 7 | Poly-Nylon | 3.0 | 1000 | 7.4 | 0.17 |
| 30NV0608 | 6 X 8 | Poly-Nylon | 3.0 | 1000 | 10.1 | 0.22 |
| 30NV0685 | 6 X 8½ | Poly-Nylon | 3.0 | 1000 | 10.7 | 0.28 |
| 30NV0610 | 6 X 10 | Poly-Nylon | 3.0 | 1000 | 12.6 | 0.32 |
| 30NV0612 | 6 X 12 | Poly-Nylon | 3.0 | 1000 | 15.1 | 0.42 |
| 30NV0615 | 6 X 15 | Poly-Nylon | 3.0 | 1000 | 18.9 | 0.56 |
| 30NV0620 | 6 X 20 | Poly-Nylon | 3.0 | 1000 | 25.3 | 0.23 |
| 30NV0709 | 7 X 9 | Poly-Nylon | 3.0 | 1000 | 13.3 | 0.30 |
| 30NV0711 | 7 X 11 | Poly-Nylon | 3.0 | 1000 | 16.2 | 0.35 |
| 30NV0810 | 8 X 10 | Poly-Nylon | 3.0 | 1000 | 16.8 | 0.37 |
| 30NV0812 | 8 X 12 | Poly-Nylon | 3.0 | 1000 | 20.2 | 0.45 |
| 30NV0815 | 8 X 15 | Poly-Nylon | 3.0 | 1000 | 25.2 | 0.55 |
| 30NV1010 | 10 X 10 | Poly-Nylon | 3.0 | 1000 | 21.0 | 0.44 |
| 30NV1012 | 10 X 12 | Poly-Nylon | 3.0 | 1000 | 25.2 | 0.54 |
| 30NV1013 | 10 X 13 | Poly-Nylon | 3.0 | 1000 | 27.3 | 0.57 |
| 30NV1015 | 10 X 15 | Poly-Nylon | 3.0 | 1000 | 31.6 | 0.61 |
| 30NV1018 | 10 X 18 | Poly-Nylon | 3.0 | 500 | 37.9 | 0.41 |
| 30NV1022 | 10 X 22 | Poly-Nylon | 3.0 | 500 | 46.3 | 0.50 |
| 30NV1028 | 10 X 28 | Poly-Nylon | 3.0 | 500 | 58.9 | 0.63 |
| 30NV1030 | 10 X 30 | Poly-Nylon | 3.0 | 500 | 63.1 | 0.60 |
| 30NV1212 | 12 X 12 | Poly-Nylon | 3.0 | 1000 | 30.3 | 0.58 |
| 30NV1214 | 12 X 14 | Poly-Nylon | 3.0 | 1000 | 35.3 | 0.68 |
| 30NV1215 | 12 X 15 | Poly-Nylon | 3.0 | 500 | 37.9 | 0.41 |
| 30NV1216 | 12 X 16 | Poly-Nylon | 3.0 | 500 | 40.4 | 0.44 |
| 30NV1218 | 12 X 18 | Poly-Nylon | 3.0 | 500 | 45.4 | 0.49 |
| 30NV1222 | 12 X 22 | Poly-Nylon | 3.0 | 500 | 55.5 | 0.53 |
| 30NV1416 | 14 X 16 | Poly-Nylon | 3.0 | 500 | 47.1 | 0.58 |
| 30NV1420 | 14 X 20 | Poly-Nylon | 3.0 | 500 | 58.9 | 0.56 |
| 30NV1424 | 14 X 24 | Poly-Nylon | 3.0 | 500 | 70.7 | 0.67 |
| 30NV1620 | 16 X 20 | Poly-Nylon | 3.0 | 500 | 67.3 | 0.64 |
| 30NV1622 | 16 X 22 | Poly-Nylon | 3.0 | 500 | 74.0 | 0.71 |
| 30NV1624 | 16 X 24 | Poly-Nylon | 3.0 | 500 | 80.8 | 0.77 |
| 30NV1626 | 16 X 26 | Poly-Nylon | 3.0 | 500 | 87.5 | 1.19 |
| 30NV1628 | 16 X 28 | Poly-Nylon | 3.0 | 500 | 94.3 | 0.90 |

SECTION 14 **POLY PAN LINERS**

14.1 POLY PAN LINERS



NEW **VALUE PLUS**

VALUE PLUS

POLY-NYLON PAN LINERS

- 1 mil thick Polyethylene and Nylon material offers unmatched protection and durability.
- Temperature range -70° F to 400° F
- Packaged 100/case

0.8 MIL PAN LINERS (PVL)

- 0.8 mil gauge thickness for rugged performance at a great price
- Made with Elkay-exclusive PTL material
- Temperature range -100° F to 400° F
- Packaged 100/case

0.48 MIL PAN LINERS (PTL)

- Value Plus Poly Pan Liners are the value leader in ovenable pan liners
- Made with Elkay-exclusive PTL material
- Temperature range -100° F to 400° F
- Packaged 200/case

• **Pan Liners are also excellent for short-term food storage: just lift them from the pan and close with a twist tie!**

| NYLON PAN LINERS | NEW VALUE PLUS 0.8 MIL PAN LINERS | VALUE PLUS 0.48 MIL PAN LINERS | PAN DESCRIPTION | PAN SIZE | DEPTH | BAG SIZE |
|------------------|--|--------------------------------|-----------------------------------|---|---------------------------------|-----------|
| PL2311 | PVL2311 | PTL2311 | Half Pan Shallow | 10 ³ / ₈ X 12 ¹³ / ₁₆ | 2½ | 23 X 11 |
| PL2314 | PVL2314 | PTL2314 | Half Pan Medium & Deep | 10 ³ / ₈ X 12 ¹³ / ₁₆ | 4 & 6 | 23 X 14 |
| PL1910 | | PTL1910 | Third & Quarter Pan Shallow | 6 ⁷ / ₈ X 12 ¹³ / ₁₆ | 2½ | 19 X 10 |
| PL1914 | | PTL1914 | Third & Quarter Pan Medium & Deep | 6 ⁷ / ₈ X 12 ¹³ / ₁₆ | 4 & 6 | 19 X 14 |
| PL1318 | | PTL1318 | Six Pan | 6 ⁷ / ₈ X 6 ³ / ₈ | 6 | 13 X 18 |
| PL3412 | PVL3412 | PTL3412 | Hotel Pan Shallow & Medium | 20 ¹³ / ₁₆ X 12 ¹³ / ₁₆ | 2½ & 4 | 34 X 12 |
| PL3418 | PVL3418 | PTL3418 | Hotel Pan Deep | 20 ¹³ / ₁₆ X 12 ¹³ / ₁₆ | 6 | 34 X 18 |
| PL0914 | | PTL0914 | 2 Quart Round | 5½ diameter | 8 ¹³ / ₁₆ | 9 X 14 |
| PL1215 | | PTL1215 | 4 Quart Round | 7 diameter | 8 ¹³ / ₁₆ | 12 X 15 |
| PL1515 | | PTL1515 | 6 & 7 Quart Round | 9½ diameter | 8 ¹³ / ₁₆ | 15 X 15 |
| PL1820 | | PTL1820 | 9 & 11 Quart Round | 11 diameter | 8 ¹³ / ₁₆ | 18 X 20 |
| PL191425 | | PTL191425 | Half Bun Pan Sheet | 18 X 23 | N/A | 19 X 14¼ |
| PL205285 | PVL205285 | PTL205285 | Bun Pan Sheet | 25½ X 17½ | N/A | 20½ X 28½ |

14.2 HIGH DENSITY STEAM TABLE PAN LINERS ON ROLLS



- Excellent choice for steam table pan liner applications
- Available in three common pan sizes
- Great for bulky item storage or as a dust cover
- Packed on rolls in a convenient dispenser pack
- Twist ties included

| ITEM | PAN DESCRIPTION | PAN SIZE | DEPTH | BAG SIZE | GAUGE (MIL) | APPROX QTY/ROLL |
|-----------|-------------------------------------|---|-------|----------|-------------|-----------------|
| BOR1814HD | Third and Quarter Pan Medium & Deep | 6 ⁷ / ₈ X 12 ¹³ / ₁₆ | 4 & 6 | 18 X 14 | 0.5 | 250 |
| BOR2417HD | Half Pan Medium & Deep | 10 ³ / ₈ X 12 ¹³ / ₁₆ | 4 & 6 | 24 X 17 | 0.5 | 250 |
| BOR3425HD | Hotel Pan Deep | 20 ¹³ / ₁₆ X 12 ¹³ / ₁₆ | 6 | 34 X 25 | 0.5 | 250 |

SECTION 15 T-SHIRT/MERCHANDISE BAGS/WET PACKS

15.1 HIGH DENSITY T-SHIRT/MERCHANDISE BAGS - BULK PACK



- Tabbed for use with counter rack
- Items noted are made with Controlled-Life Technology

| ITEM | SIZE | MATERIAL | GAUGE (MIL) | QTY /CASE | APPROX LBS/M | CUBE |
|-----------|--|----------|-------------|-----------|--------------|------|
| CT1520W* | 10 X 5 X 19 (White With WARNING Print) | HDPE | 0.48 | 2000 | 9.4 | 0.39 |
| CT1923B6 | 11½ X 6½ X 21½ (Black) | HDPE | 0.55 | 1000 | 11.8 | 0.40 |
| CT1923W6 | 11½ X 6½ X 21½ (White With WARNING Print) | HDPE | 0.5 | 1000 | 12.4 | 0.43 |
| CT1923W6D | 11½ X 6½ X 21½ | HDPE | 0.5 | 1000 | 12.9 | 0.50 |
| CT1923WD | 12 X 7 X 22 | HDPE | 0.5 | 1000 | 13.9 | 0.41 |
| CT1923W | 12 X 7 X 22 (White With WARNING Print) | HDPE | 0.5 | 1000 | 14.8 | 0.40 |
| CTTRACK | 14¼ X 13¾ X 12¼ (Rack for SNAP-EZE®) | N/A | N/A | 1 | 5.5 (ea) | 1.22 |

*Made with d2w® Controlled-Life Technology

15.2 "THANK YOU" PRINTED HIGH DENSITY T-SHIRT/MERCHANDISE BAGS (WHITE) - BULK PACK



- Tabbed for use with counter rack
- Items noted are made with Controlled-Life Technology

| ITEM | SIZE | MATERIAL | GAUGE (MIL) | QTY /CASE | APPROX LBS/M | CUBE |
|-----------|----------------|----------|-------------|-----------|--------------|------|
| CT1520TY* | 10 X 5 X 19 | HDPE | 0.47 | 2000 | 9.4 | 0.59 |
| CT1620TY* | 10 X 6 X 20 | HDPE | 0.48 | 2000 | 11.9 | 0.59 |
| CT1923TYD | 11½ X 6½ X 21½ | HDPE | 0.5 | 1000 | 11.8 | 0.41 |

*Made with d2w® Controlled-Life Technology

15.3 PLAIN HEAVY DUTY HIGH DENSITY T-SHIRT/MERCHANDISE BAGS (WHITE) - BULK PACK



- Tabbed for use with counter rack
- Items noted are made with Controlled-Life Technology

| ITEM | SIZE | MATERIAL | GAUGE (MIL) | QTY /CASE | APPROX LBS/M | CUBE |
|---------|--------------|----------|-------------|-----------|--------------|------|
| CT2427* | 14 X 10 X 27 | HDPE | 0.75 | 500 | 33.3 | 0.43 |
| CT2830* | 18 X 10 X 30 | HDPE | 0.8 | 500 | 39.2 | 0.67 |

*Made with d2w® Controlled-Life Technology

15.4 PLASTRONIC® HIGH DENSITY T-SHIRT/MERCHANDISE BAGS



- Convenient dispenser carton
- Made with Controlled-Life Technology
- Available in blue, chocolate, magenta, orange, red, white, and yellow
- Visit elkayplastics.com for colors and item numbers

| ITEM | SIZE | MATERIAL | GAUGE (MIL) | QTY /CASE | APPROX LBS/M | CUBE |
|----------|---|----------|-------------|-----------|--------------|------|
| CT1318W* | 8 X 5 X 18 (Available in White only) | HDPE | 0.6 | 1000 | 7.6 | 0.27 |
| CT1423* | 9 X 5 X 23 | HDPE | 0.6 | 1000 | 12.8 | 0.43 |
| CT1621* | 10 X 6 X 21 | HDPE | 0.6 | 1000 | 13.4 | 0.39 |
| CT1824* | 12 X 6 X 23 | HDPE | 0.65 | 1000 | 17.3 | 0.49 |
| CT2024* | 12 X 8 X 24 | HDPE | 0.65 | 1000 | 20.8 | 0.39 |

*Made with d2w® Controlled-Life Technology

15.5 WET PACK/GROCERY BAGS (WHITE - HIGH DENSITY) COUNTER PACKS



- Isolates cold or wet items and prevents damage to other items
- Packaged in easy dispensing counter packs

| ITEM | SIZE | MATERIAL | GAUGE (MIL) | QTY /CASE | APPROX LBS/M | CUBE |
|-------|--|----------|-------------|-----------|--------------|------|
| H-04 | #4 (5 X 3 X 11) | HDPE | 0.5 | 1000 | 2.9 | 0.11 |
| H-06 | #6 (6 X 3½ X 12) Excellent "Food-To-Go" Bag | HDPE | 0.5 | 1000 | 3.8 | 0.14 |
| H-08 | #8 (6 X 3½ X 14) | HDPE | 0.5 | 1000 | 4.4 | 0.16 |
| H-12 | #12 (7 X 4 X 15) White Embossed | HDPE | 0.5 | 500 | 5.5 | 0.14 |
| H-420 | #20 (8 X 5 X 18) | HDPE | 0.5 | 1000 | 7.8 | 0.27 |

15.6 NON-WOVEN POLYPROPYLENE BAGS



- Strong & durable shopping bag
- Comfortable handles
- Washable, reusable and 100% recyclable

| ITEM | SIZE | MATERIAL | GAUGE | QTY /CASE | APPROX LBS/CASE | CUBE |
|---------------------|-------------------------------------|----------|--------|-----------|-----------------|------|
| SHOPPING BAG | | | | | | |
| NW128138 | 12½ X 8½ X 13½ + 8½BG | NWPP | 80 GSM | 100 | 26.1 | 0.57 |
| WINE CARRIER | | | | | | |
| NW7493 | 7 X 3¾ X 9¼ + 3¾BG (Two Bottle) | NWPP | 80 GSM | 600 | 35.8 | 4.57 |
| NW7797 | 7 X 7½ X 9¼ + 7½BG (Four Bottle) | NWPP | 80 GSM | 300 | 27.3 | 4.39 |

SECTION 16 RECLOSABLE BAGS

16.1 RECLOSABLE BAGS (PINT, QUART AND GALLON)



- Zipper closure keeps food fresh and allow easy access to the contents
- Available in standard sizes

| ITEM | SIZE | MATERIAL | GAUGE (MIL) | QTY /CASE | APPROX LBS/M | CUBE |
|----------|--|----------|-------------|-----------|--------------|------|
| F20608W | 6 X 8 (Pint White Block) | LDPE | 2.0 | 1000 | 8.4 | 0.25 |
| F20708Q* | 7 X 8 (Quart With Write-On Strips and LK Logo) | LDPE | 1.75 | 500 | 9.2 | 0.20 |
| F21012G* | 10 X 12 (Gallon With Write-On Strips and LK Logo) | LDPE | 1.75 | 250 | 18.0 | 0.19 |
| 1GALFR* | 10 ⁹ / ₁₆ X 11 (1 Gallon Freezer White Block) | LDPE | 2.7 | 250 | 25.9 | 0.20 |
| F21315 | 13 X 15 | LDPE | 2.0 | 1000 | 32.9 | 0.81 |
| 2GALFR* | 13 X 15 ¹ / ₂ (2 Gallon Freezer White Block) | LDPE | 2.7 | 100 | 44.9 | 0.17 |

*Pop-Up Dispenser Box

SECTION 17 ICE BAGS

17.1 METALLOCENE ICE BAGS PLAIN



- Special additives for ideal freezer performance
- Excellent impact strength and durability

| ITEM | SIZE | MATERIAL | GAUGE (MIL) | QTY /CASE | APPROX LBS/M | CUBE |
|---------|---|----------|-------------|-----------|--------------|------|
| H18MET* | 9 X 18 (5 LB) | LDPE/MET | 1.2 | 1000 | 13.0 | 0.31 |
| H20MET* | 11 X 20 (8 LB) | LDPE/MET | 1.2 | 1000 | 17.6 | 0.39 |
| H21MET* | 12 X 21 (10 LB) | LDPE/MET | 1.2 | 1000 | 20.2 | 0.45 |
| H28MET* | 13 ¹ / ₂ X 28 (20 LB) | LDPE/MET | 1.75 | 500 | 22.1 | 0.50 |

*These items include twist ties

17.2 METALLOCENE ICE BAGS PRINTED



- Special additives for ideal freezer performance
- Excellent impact strength and durability
- Printed "Ice" (1C/1S)

| ITEM | SIZE | MATERIAL | GAUGE (MIL) | QTY /CASE | APPROX LBS/M | CUBE |
|-----------|---|----------|-------------|-----------|--------------|------|
| H18PMET* | 9 X 18 (5 LB) | LDPE/MET | 1.2 | 1000 | 13.0 | 0.58 |
| H11PMET* | 8 X 3 X 20 (8 LB) | LDPE/MET | 1.2 | 1000 | 17.6 | 0.42 |
| H18PDS | 11 ¹ / ₂ X 18 (8 LB) (Drawstring) | LDPE/MET | 1.2 | 500 | 36.0 | 0.31 |
| H20PWMET* | 11 X 20 + 1 ¹ / ₂ LP (8 LB) (Wicket) | LDPE/MET | 1.5 | 1000 | 22.9 | 0.52 |
| H12PMET* | 9 X 3 X 21 (10 LB) | LDPE/MET | 1.2 | 1000 | 20.2 | 0.49 |
| H19PDS | 12 X 19 (10 LB) (Drawstring) | LDPE/MET | 1.35 | 500 | 22.7 | 0.39 |
| H21PMET* | 12 X 21 (10 LB) | LDPE/MET | 1.2 | 1000 | 18.5 | 0.45 |
| H28PMET* | 13 ¹ / ₂ X 28 (20 LB) | LDPE/MET | 1.75 | 500 | 44.2 | 0.50 |
| H30PMET* | 15 X 30 (25 LB) | LDPE/MET | 2.0 | 500 | 60.1 | 0.68 |

*These items include twist ties

17.3 ICE BAGGER AND BAGS



- Sturdy rust-resistant metal construction
- Includes hanger bracket and ice funnel
- Removable ice funnel for easy cleaning
- Can be configured for left or right-hand operation

| ITEM | FOR USE WITH BAG SIZE | SIZE |
|-------------------|--|--|
| ICE BAGGER | | |
| SMICEMACH | 8 - 10 LB | 13 ¹ / ₄ X 10 ¹ / ₄ X 28 ¹ / ₂ |
| LGICEMACH | 20 LB ICE BAGGER WITH ADAPTER FOR 8 - 10 LB BAGS | 13 ¹ / ₄ X 10 ¹ / ₄ X 36 |



- For use with Ice Baggers above
- Packaged on plastic fill line headers
- Bundled 250 bags/header
- Printed "ICE" 1C/1S

| ITEM | SIZE | BAG SIZE | GAUGE (MIL) | QTY /CASE |
|---|-------|--|-------------|-----------|
| PRINTED ICE BAGS ON PLASTIC HEADER | | | | |
| H19PWMET | 8 LB | 11 X 19 + 4BG + 1 ¹ / ₂ LP | 1.25 | 1000 |
| H21PWMET | 10 LB | 12 X 19 + 4BG + 1 ¹ / ₂ LP | 1.25 | 1000 |
| H26PWMET | 20 LB | 12 X 26 + 4BG + 1 ¹ / ₂ LP | 1.75 | 500 |

SECTION 18 MISCELLANEOUS

18.1 HIGH DENSITY WET UMBRELLA BAGS



- Bold wet umbrella graphic design
- Packed on convenient header packs for easy dispensing
- Header pack has 4 large side holes and center hole to accommodate various stand and hook designs

| ITEM | SIZE | GAUGE (MIL) | QTY /CASE | APPROX LBS/M | CUBE |
|---------------------------------|---|-------------|-----------|--------------|------|
| PACKAGED 100 BAGS/HEADER | | | | | |
| UB0724 | 7 X 24 + 1 ¹ / ₂ LP | 0.7 | 1000 | 8.1 | 0.28 |
| UB0735 | 7 X 35 + 1 ¹ / ₂ LP | 0.7 | 1000 | 11.7 | 0.38 |
| UMBRELLA BAG STAND | | | | | |
| UBSTAND | 19 X 45 | N/A | 1 | 21.0 | 2.35 |

For Terms and Conditions, please visit
www.elkayplastics.com/termsandconditions

ISO 9001-2008 Registered

**SERVING DISTRIBUTORS
ACROSS THE NATION**



**HEADQUARTERS
LOS ANGELES**

6000 Sheila Street
Commerce, CA 90040-2405
(323) 722-7073
(800) 631-6131
FAX (323) 869-3911

DENVER

14600 East 35th Place
Unit D
Aurora, CO 80011-1227
(303) 375-0170
(800) 634-8921
FAX (303) 375-0174

ATLANTA

7515 Hartman Industrial Way
Suite 200
Austell, GA 30168-7777
(770) 308-4508
(800) 842-2247
FAX (678) 398-6904

PHILADELPHIA

101 Thoms Drive
Phoenixville, PA 19460-6113
(610) 933-9045
(800) 613-9367
FAX (610) 933-9070

(NEW LOCATION)

CHICAGO

1365 Mitchell Blvd.
Schaumburg, IL 60193-4552
(630) 350-9600
(800) 600-7659
FAX (630) 350-9739

SAN FRANCISCO

23841 Foley Street
Hayward, CA 94545-1617
(510) 887-1223
(800) 426-4213
FAX (510) 887-4114

DALLAS

2833 Eisenhower Street
Suite 124
Carrollton, TX 75007-4966
(972) 242-1466
(800) 521-0919
FAX (972) 466-1416

SEATTLE

6425 South 224th Street
Kent, WA 98032-2456
(425) 656-8822
(800) 333-5529
FAX (425) 656-8826

Elkay Distributors can place orders anytime online at
www.elkayplastics.com or call **800-809-8393**