

# MAKE THE SWITCH TO THE MAT THAT STICKS



Traditional entrance mats are trip hazards when they shift, ripple and flip.

**GRP92**  
Checked texture shown in Burgundy  
(6'W x 10'L)

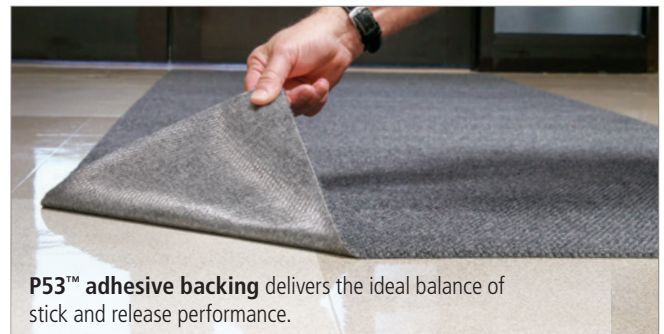
**NEW!**

## Grippy® Carpeted Entrance Mat

Eliminate slips, trips and falls and capture dirt and liquid at your door with our stylish adhesive-backed mat.



Tested and certified by the National Floor Safety Institute (NFSI) to reduce slip and fall claims by as much as 90% when used as part of a Floor Safety Program.



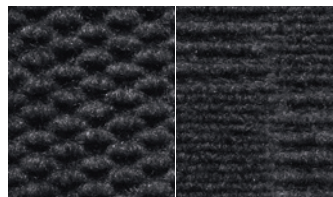
**P53™ adhesive backing** delivers the ideal balance of stick and release performance.

**NOW IN BERBER AND CHECKERED TEXTURES! FULL PRODUCT DETAILS ON BACK.**

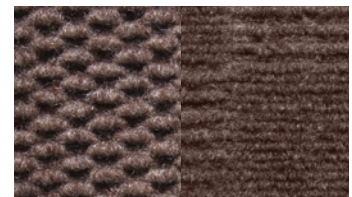
# PIG Grippy® Carpeted Entrance Mat

## FEATURES & BENEFITS

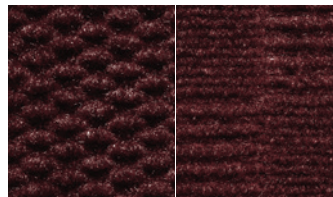
- Adhesive-backed mat stays exactly where you put it with **no shifting, rippling or flipping over**
- **P53™ adhesive backing** delivers the ideal balance of stick and release performance
- **Create inviting entrances** and impress your guests; multiple textures and colors complement modern or upscale lobbies and vestibules
- High-performance needlepunched fibers and low-profile surface design **trap dirt and liquids** to help prevent tracking
- **Quick-dry, colorfast fibers** resist staining and fading; made from 100% post-consumer recycled content
- No rippled edges to obstruct doors or create tripping hazards; **ADA compliant** for wheelchairs and walkers
- **Commercial-grade durability** lets you keep mat in place for three to six months depending on your conditions
- **Clean your floors with mats in place**, no dragging heavy mats around; won't budge under vacuum or water extractor for easy routine maintenance
- EZCut™ design lets you roll out **continuous walk-off coverage**; cuts easily without fraying or unraveling so you can create custom sizes and shapes



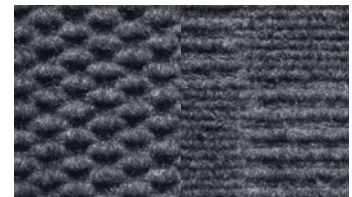
**Black**  
GRP91 – Berber    GRP92 – Checkered



**Brown**  
GRP91 – Berber    GRP92 – Checkered



**Burgundy**  
GRP91 – Berber    GRP92 – Checkered



**Gray**  
GRP91 – Berber    GRP92 – Checkered

## PIG Grippy® Carpeted Entrance Mat

Choose a texture, size and color to get the Grippy Mat you want.

Item #

**GRP91** • Berber • Choose 6'W x 10'L or 3'W x 25'L Roll • Black, Brown, Burgundy or Gray

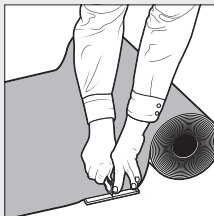
**GRP92** • Checkered • Choose 6'W x 10'L or 3'W x 25'L Roll • Black, Brown, Burgundy or Gray

Adhesive notice: If you have questions about the suitability of New Pig adhesive-backed mats for your application, test a 6" x 6" piece in a noncritical area before use. Patent pending

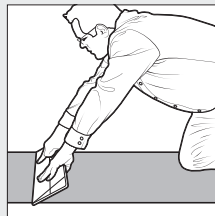
## Easy Installation in 3 Simple Steps



**1. Prepare Floor**  
Clean and dry floor thoroughly so mat will properly adhere.



**2. Cut to Fit**  
Roll out and cut to size using Safety Knife, scissors or utility blade.



**3. Stick It Down!**  
Position mat, smooth it out and press into place using Installation Board.



PIG Grippy Mat is available from New Pig and our fine distribution partners.



**New Pig**

One Pork Avenue  
Tipton, PA 16684-0304

**newpig.com**

North America: **1-855-474-7791**

Europe: **+31 (0)76 596 92 50**

PIG, PIG logo are registered trademarks in USA and other countries. See [tm.newpig.com](http://tm.newpig.com)

UK: **0800 919 900**

Outside North America:

**+1-814-684-0101**